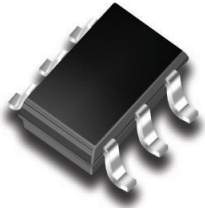

INTERFACE APP NOTE
VDSL Protection

SOT-23-6 PACKAGE
OBJECTIVE

VDSL circuits are sometimes combined with POTS (Plain Old Telephone Service) circuits. This solution protects those communication ports against surge and power contact threats.

BENEFIT

This integrated TVS diode solution is designed to protect the interface against surge events by using one device (DSL03-24).

COMPLIANCE

- IEC 61000-4-2 ±8kV Contact, ±15kV Air Discharge
- IEC 61000-4-4 EFT 40A, 5/50ns
- IEC 61000-4-5 Surge Secondary Lightning, 15A @ 8/20µs

SOLUTION

- 1 x DSL03-24 in SOT-23-6 Package
- Stand-Off Voltage V_{WM} : 24.0 Volts
- Breakdown Voltage $B_{V_{MIN}}$: 26.0 Volts
- $V_C @ I_p$: 55V @ 15A
- Leakage Current I_r : 0.1µA
- Max. Capacitance: 5.0pF

ALTERNATE RECOMMENDATIONS

- 1 x DSL03-24T

