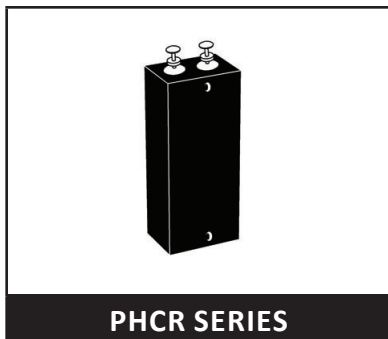


HIGH POWERED TVS COMPONENT



Bidirectional



APPLICATIONS

- DC & AC Applications
- Remote Transmission Lines

FEATURES

- High Current Capability
- Excellent Clamping Voltage
- Glass Passivated Junction
- Bidirectional Configuration
- Low Slope Resistance
- Repetition Rate (Duty Cycle): 0.01%
- Hazardous Substance Free
- RoHS Complaint (Exemption #7)

MECHANICAL CHARACTERISTICS

- Epoxy Encapsulated Device
- High Temperature Soldering: 260°C / 10 seconds at Terminals
- Flammability Rating UL 94V-0
- Marking: Part Number

DEVICE RATINGS @ 25°C Unless Otherwise Specified

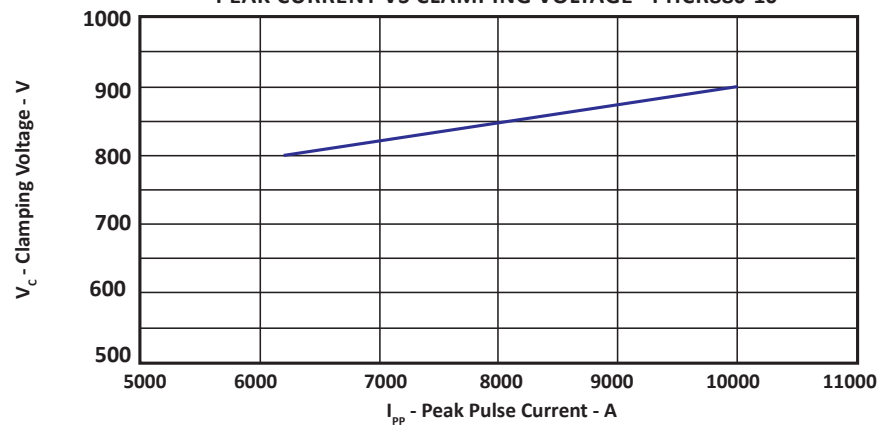
PARAMETER	SYMBOL	VALUE	UNITS
Operating Temperature	T_J	85	°C
Storage Temperature	T_{STG}	-55 to 150	°C

TYPICAL DEVICE CHARACTERISTICS

ELECTRICAL CHARACTERISTICS PER LINE @ 25°C Unless Otherwise Specified

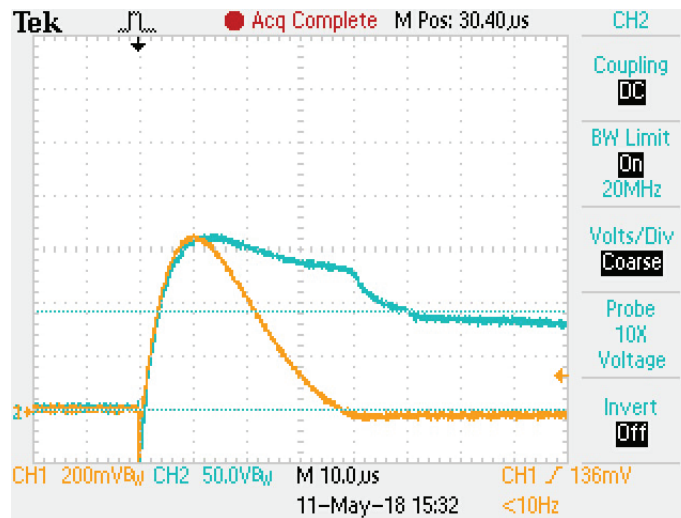
PART NUMBER	REVERSE STAND-OFF VOLTAGE		TYPICAL TRIGGER VOLTAGE $V_{TRIGGER}$ VOLTS	MAXIMUM CURRENT RATING 8/20 μ s kA	TYPICAL CLAMPING VOLTAGE @ I_{PP} V_C VOLTS	REVERSE LEAKAGE CURRENT @ V_{DC} I_R μ A	TYPICAL CAPACITANCE @0V, 1MHz C pF
	V_{AC} VOLTS	V_{DC} VOLTS					
PHCR660-1.0	440.0	620.0	1100.0	1.0	1000.0	5	5
PHCR880-1.0	660.0	880.0	1300.0	1.0	1300.0	5	5
PHCR660-2.5	440.0	620.0	1100.0	2.5	1000.0	5	5
PHCR880-2.5	660.0	880.0	1300.0	2.5	1250.0	5	5
PHCR660-5	440.0	620.0	1100.0	5	1000.0	5	5
PHCR880-5	660.0	880.0	1300.0	5	1250.0	5	5
PHCR660-10	440.0	620.0	1100.0	10	1000.0	5	5
PHCR880-10	660.0	880.0	1300.0	10	1250.0	5	5

FIGURE 1
PEAK CURRENT VS CLAMPING VOLTAGE - PHCR880-10



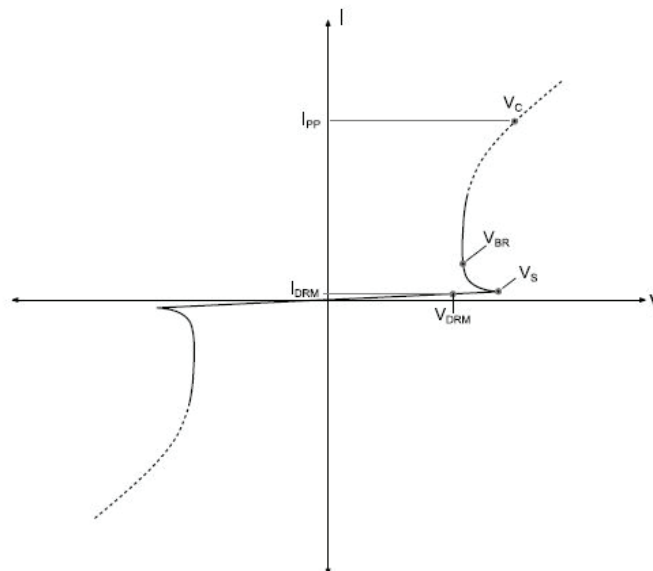
TYPICAL DEVICE CHARACTERISTICS

FIGURE 2
ESD WAVEFORM - PHCR880-10



200mV = 2000A/div
 50V = 250V/div

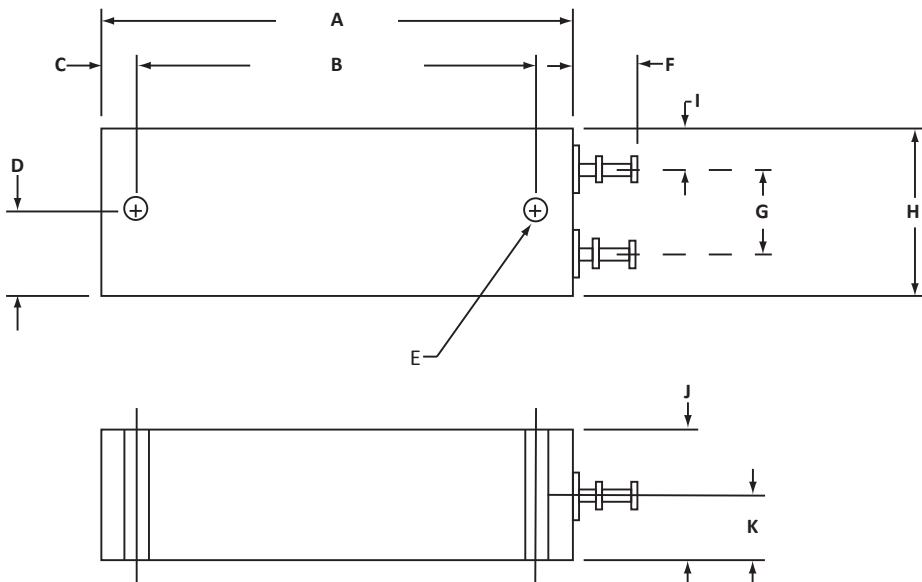
FIGURE 3
VI CURVE



PACKAGE INFORMATION

OUTLINE DIMENSIONS				
DIM	MILLIMETERS		INCHES	
	MIN	MAX	MIN	MAX
A	62.74	64.26	2.47	2.53
B	53.34	54.48	2.10	2.145
C	4.32	5.33	0.17	0.21
D	10.54	12.07	0.415	0.475
E	3.18 DIA		0.125 DIA	
F	8.26	9.27	0.325	0.365
G	11.43		0.45	
H	21.84	23.37	0.86	0.92
I	5.59		0.22	
J	16.51	17.53	0.65	0.69
K	8.51		0.335	

NOTES
1. Dimensions "E", "G", "I" and "K" are nominal.



ORDERING INFORMATION

BASE PART NUMBER	MARKING
PHCRxxx-xx	Logo, Date Code and Part Number

COMPANY INFORMATION

COMPANY PROFILE

In business more than 20 years, ProTek Devices™ is a privately held semiconductor company. The company offers a product line of overvoltage protection and overcurrent protection components. These include transient voltage suppressor array (TVS arrays) avalanche breakdown diode, steering diode TVS array and electronics SMD chip fuses. These components deliver circuit protection in electronic systems from numerous overvoltage and overcurrent events. They include lightning; electrostatic discharge (ESD); nuclear electromagnetic pulses (NEMP); inductive switching; and electromagnetic interference (EMI) / radio frequency interference (RFI). ProTek Devices also offers LED wafer die for ESD protection and related high frequency products.

CONTACT US

Corporate Headquarters

2929 South Fair Lane
Tempe, Arizona 85282
USA

By Telephone

General: 602-431-8101
Sales: & Marketing: 602-414-5109
Customer Service: 602-414-5114
Product Technical Support: 602-414-5107

By Fax

General: 602-431-2288

By E-mail:

Asia Sales: asiasales@protekdevices.com
Europe Sales: europesales@protekdevices.com
U.S. Sales: ussales@protekdevices.com
Distributor Sales: distysales@protekdevices.com
Customer Service: service@protekdevices.com
Technical Support: support@protekdevices.com

ProTek Devices (Asia Pacific) Pte. Ltd.

8 Ubi Road 2, #06-19
Zervex
Singapore - 408538
Tel: +65-67488312
Fax: +65-67488313

Web

www.protekdevices.com

COPYRIGHT © ProTek Devices 2019 - This literature is subject to all applicable copyright laws and is not for resale in any manner.

SPECIFICATIONS: ProTek reserves the right to change the electrical and or mechanical characteristics described herein without notice.

DESIGN CHANGES: ProTek reserves the right to discontinue product lines without notice and that the final judgement concerning selection and specifications is the buyer's and that in furnishing engineering and technical assistance. ProTek assumes no responsibility with respect to the selection or specifications of such products. ProTek makes no warranty, representation or guarantee regarding the suitability of its products for any particular purpose, nor does ProTek assume any liability arising out of the application or use of any product or circuit and specifically disclaims any and all liability without limitation special, consequential or incidental damages.

LIFE SUPPORT POLICY: ProTek Devices products are not authorized for use in life support systems without written consent from the factory.